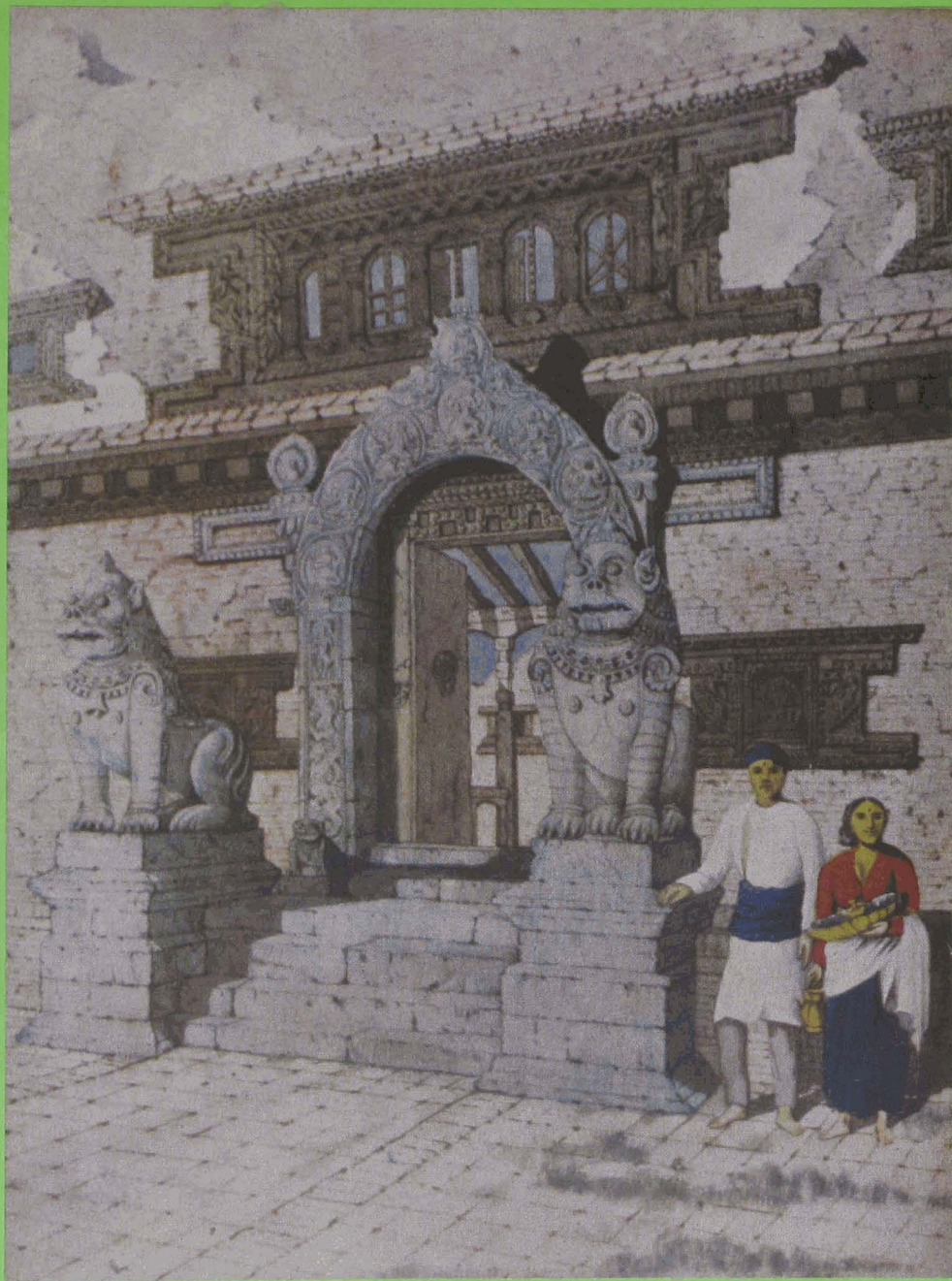


VIEWS OF
NEPAL



HENRY AND MARGARET OLDFIELD

Bibliot.,eca
Himalayica



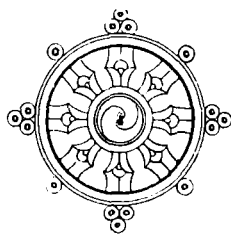
VIEWS OF

NEPAL

1851-1864

BIBLIOTHECA HIMALAYICA

SERIES III VOLUME 5



Edited by

H. K. KULØY

HENRY AMBROSE OLDFIELD
MARGARET ALICIA OLDFIELD

VIEWS OF

NEPAL

1851-1864

RATNA PUSTAK BHANDAR

KATHMANDU 1975

H. and M. Oldfield :
VIEWS OF NEPAL 1851-1864

All plates, except numbers 10,14,21,22,23,27 and 31, are
being published for the first time in this edition [1975]

THE PURPOSE OF
BIBLIOTHECA HIMALAYICA
IS TO MAKE AVAILABLE WORKS
ON THE CIVILIZATIONS AND NATURE
OF CENTRAL ASIA AND THE HIMALAYA

BIBLIOTHECA HIMALAYICA
© H. K. Kulöy

THIS IS A LIMITED DE LUXE EDITION OF 200 COPIES

THE PRESENT VOLUME IS
NO.

Printed by University Press

Tribhuvan University, Kathmandu.

INTRODUCTION

Henry Ambrose Oldfield (1822-1871), having served in the Indian Medical Service in various parts of India from 1846, was eventually posted as British Residency Surgeon in Nepal in 1850. He worked in this country until retirement in 1868. He married Margaret Alicia Prescott (1835-1928) while he was on leave in England in 1856. Three of the couple's six children were born in Nepal.

Some sketches by both husband and wife, H. A. Oldfield and M.A. Oldfield, are reproduced in the present volume. In a time when photography was too cumbersome for travellers, it appears that many British men and women studied drawing and painting before departure for overseas assignments. For the men, sketching was often important for official purposes; and for the women, artistic pursuits were frequently pastimes for long unoccupied hours. The works in this book were evidently done during the leisure time of both artists.

The originals of these reproductions are kept in the India Office Library in London, England. Those marked in the text with an asterisk (*) are pieces included in *Sketches from Nipal* by Dr. H.A. Oldfield, published in two volumes in London, 1880. The numbers in brackets in the captions refer to the catalogue numbers as listed in *British Drawings in the India Office Library* by Mildred Archer (London, 1969). Captions in quotation marks (") are quoted from this catalogue, and usually refer to the title or description written on the drawings by the artists themselves. The sizes are those of the originals, and the vertical measurement is given first. Drawings by Margaret A. Oldfield are marked by the initials M.A.O.

Special acknowledgement is due to the India Office Library for making available and permitting the reproduction of these sketches, and to Mrs. Mildred Archer, of the same Library, for her valuable assistance.

LIST OF PLATES

1. "Mountain landscape with Nanda Devi in the background
2. "Mountain landscape with snows in the distance
3. "The valley of Nepal from Naikal
4. Mountain landscape with the peaks of Devdhunga, from Shivpuri
5. "Entrance to the Perar. Mountain landscape with horses and mules
6. "The Gosainthan mountains; hillmen and a hammock in the foreground
7. "Mountain landscape; view from the Residency Surgeon's house.
8. Panch-Mane Bhanjyang, beside the old Kathmandu-Kakani road
9. Distant view of Kathmandu from Lalitpur
10. Residence of Maharaja Jang Bahadur, Thapathali
11. The Durbar, or Royal Palace, Kathmandu
12. Temples at Pashupatinath.
13. Snake-stone at the temple of 'Devi Vajra-Jogini' at Sankhu
14. Buddhist shrine of Kaithsambhu, Kathmandu
15. Pauwah at Gaucharan
16. The Residency Surgeon's house, Kathmandu
17. "A wooden house
18. Mountain village, Godavari
19. The ruins of the Durbar, Kirtipur
20. Bridge over Visnumati river near Swayambhu

21. East front of the main Buddhist temple at Swayambhu
22. Thunderbolt outside the temple at Swayambhu
23. Nyatpola (1700-02), Bhaktapur
24. South front of the Durbar, Bhaktapur
25. Bhimsen Mandir (1654-55) Bhaktapur
26. The Durbar, Bhaktapur
27. The Golden Gate (1753-54) in the Durbar, Bhaktapur
28. West end of the Durbar, Bhaktapur
29. Temple of Mahadeo, Bhaktapur
30. "Entrance to 'Huk-Vihar' monastery," Lalitpur
31. The Durbar, or Royal Palace, Lalitpur
32. North Stupa, Lalitpur
33. North front of Nak Bahee. small Buddhist monastery near Nag Bahal, Lalitpur
34. Interior courtyard of Nan Bahal
35. The centre of Lalitpur with Krishna Mandir (1722-23)
36. The centre of Lalitpur with Krishna-Dewal Mandir (1636-37)

THE HILLS



1. "Mountain landscape with Nanda Devi in the background". December 1851. Water-colour; 13½ by 19½ ins. (2827).



2. "Mountain landscape with snows in the distance and a village in the foreground." c. 1851. Water-colour; $12\frac{1}{4}$ by $9\frac{1}{4}$ ins. (2829).



3. "The valley of Nepal from Naikal; snows in the distance, a village in the foreground." Probably a view from Thankot facing NE across the Kathmandu valley. c. 1855. Water-colour; 12 $\frac{1}{2}$ by 18 $\frac{1}{2}$ ins. (2854).



4. Mountain landscape with the peaks of Devdhunga, from Shivpuri. c 1851.
Water-colour; 12 by 16½ ins. (2831).



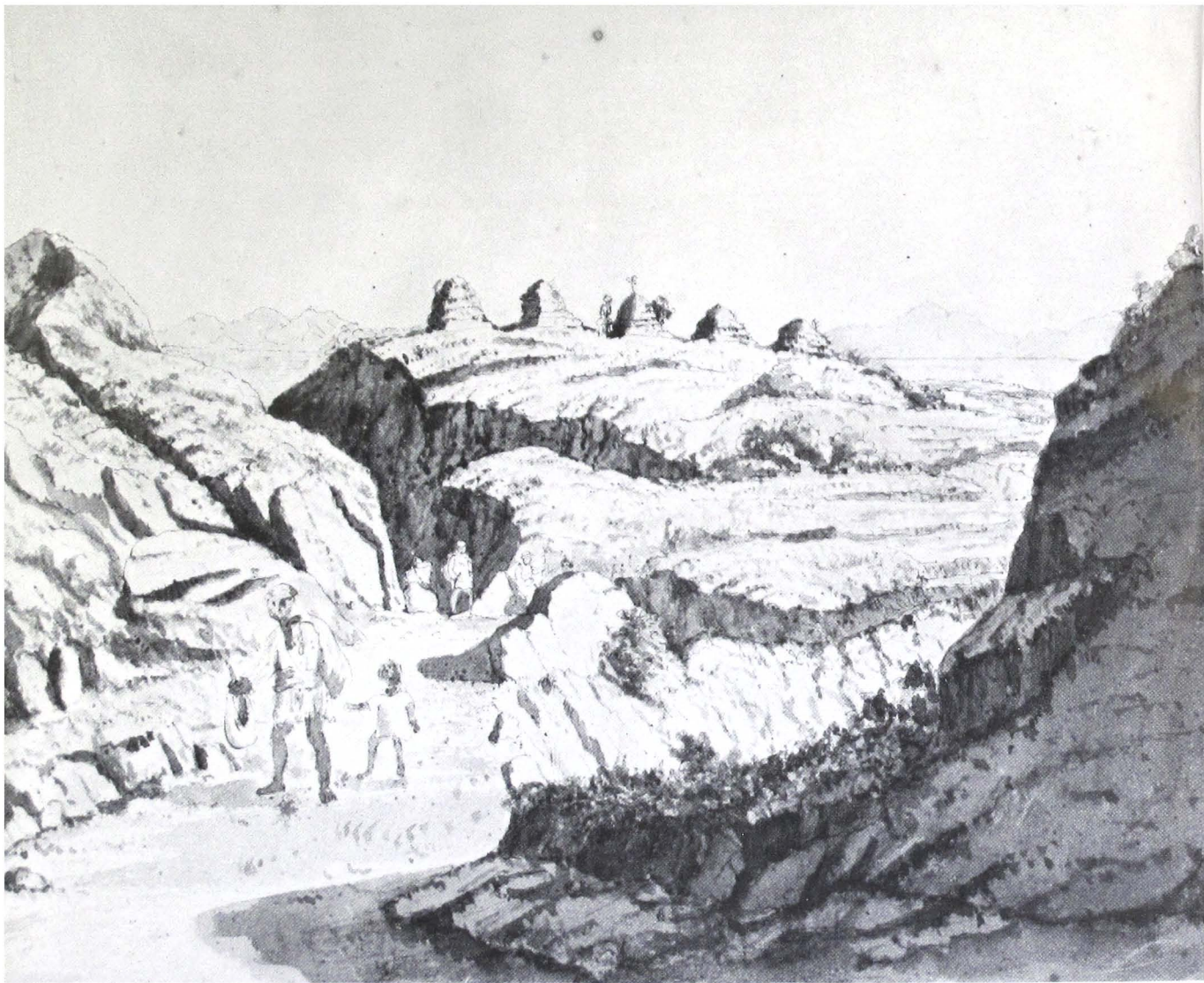
5. "Entrance to the Perar. Mountain landscape with horses and mules in the foreground." Probably the foot-hills beyond Amlekhganj. c. 1851. Water-colour; $11\frac{1}{4}$ by $14\frac{1}{4}$ ins. (2828).



6. "The Gosainthan mountains; hillmen and a hammock in the foreground."
A view north from Shivpuri, c. 1851. Water-colour; $13\frac{1}{4}$ by $17\frac{1}{2}$ ins.
(2830).



7. "Mountain landscape; view from the Residency Surgeon's house." c. 1864.
Pencil; 13 by 16 ins. (2867). M.A.O.



8. Panch-Mane Bhanjyang, beside the old Kathmandu-Kakani road, where five Chinese emissaries are said to have died and been buried in the late Eighteenth Century. 31 October 1857. Wash; 9 by 11 $\frac{1}{4}$ ins. (2856). M.A.O.

KATHMANDU

KIRTIPUR

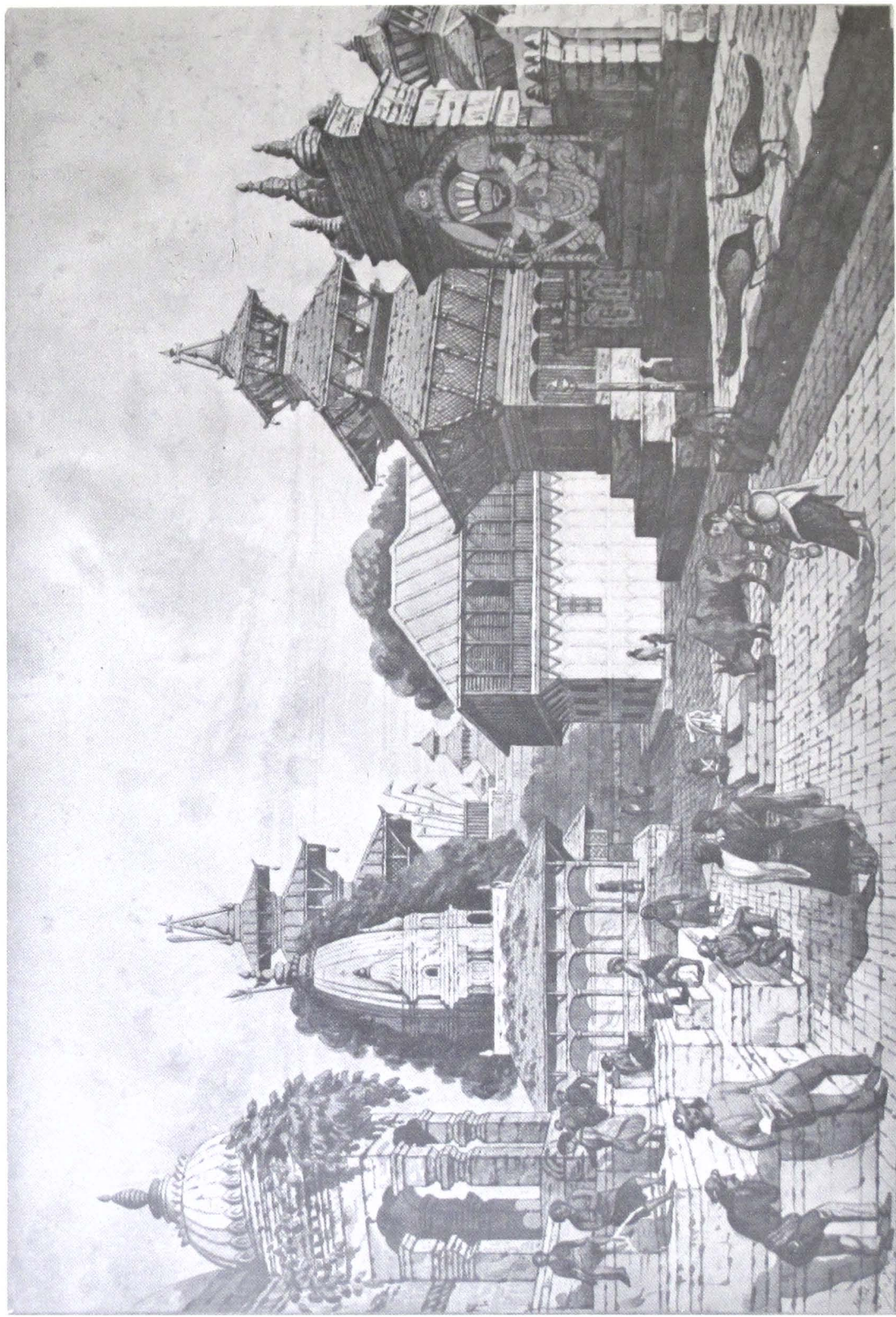
SWAYAMBHU



9. Distant view of Kathmandu from Lalitpur. April 1853. Water-colour; 12 by 16½ ins. (2839).



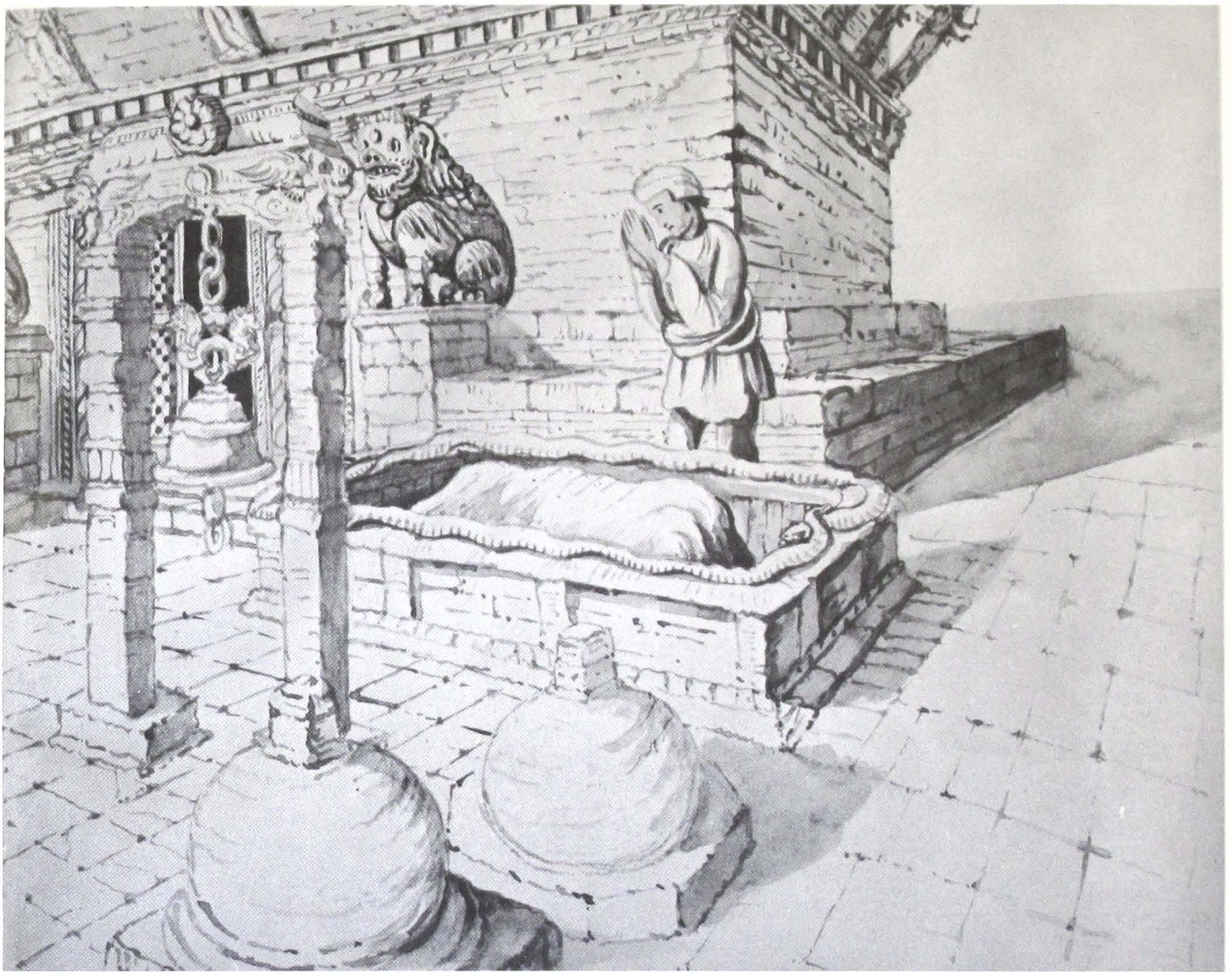
10. Residence of Maharaja Jang Bahadur, Thapathali. December 1852. Water-colour; 12 by 16 $\frac{3}{4}$ ins. (2833).



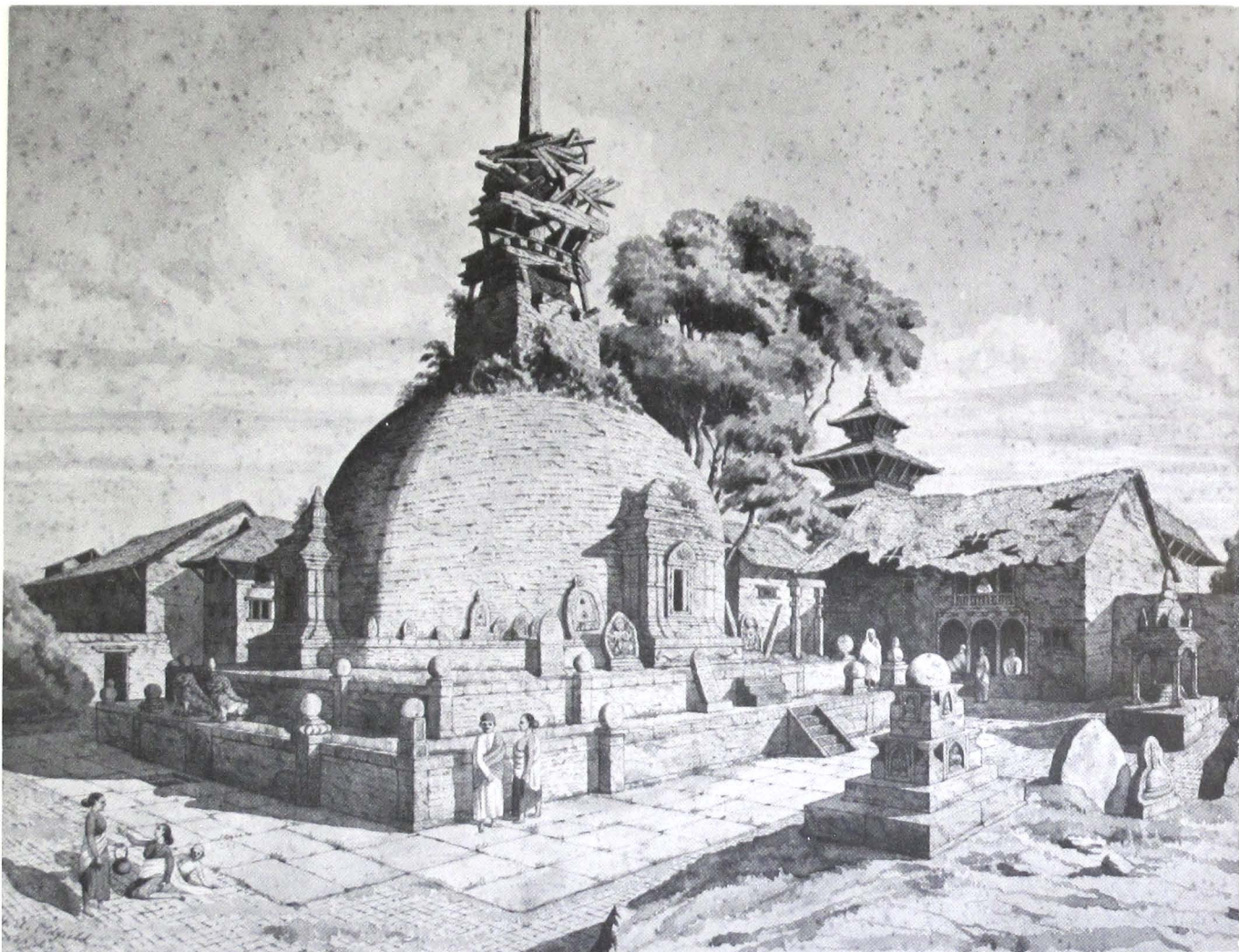
11. The Durbar, or Royal Palace, Kathmandu. c. 1852. Water-colour; 13 by 18 $\frac{3}{4}$ ins. (2834).



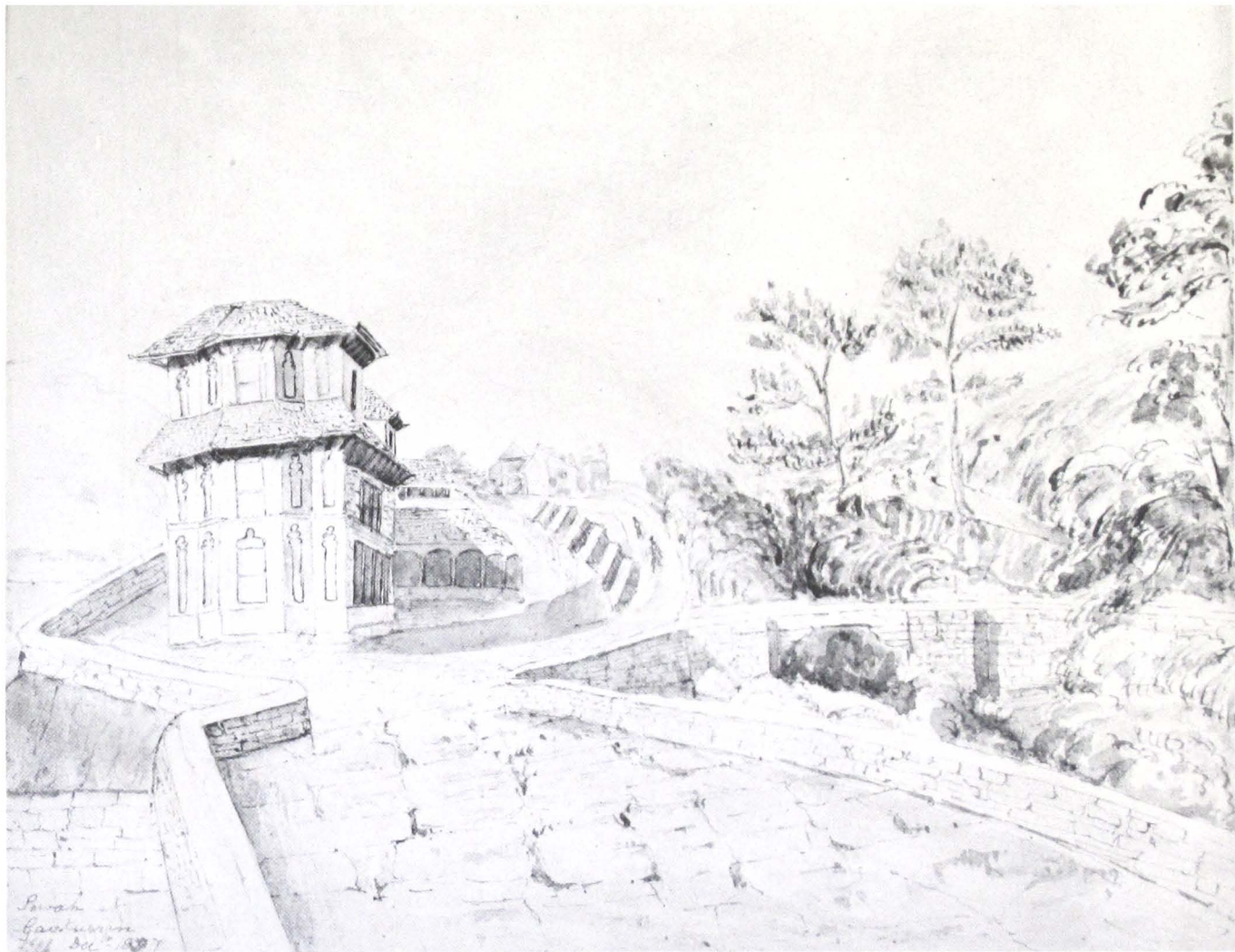
12. Temples at Pāshupatinath. April 1853. Wash; 9 by 12½ ins. (2840).



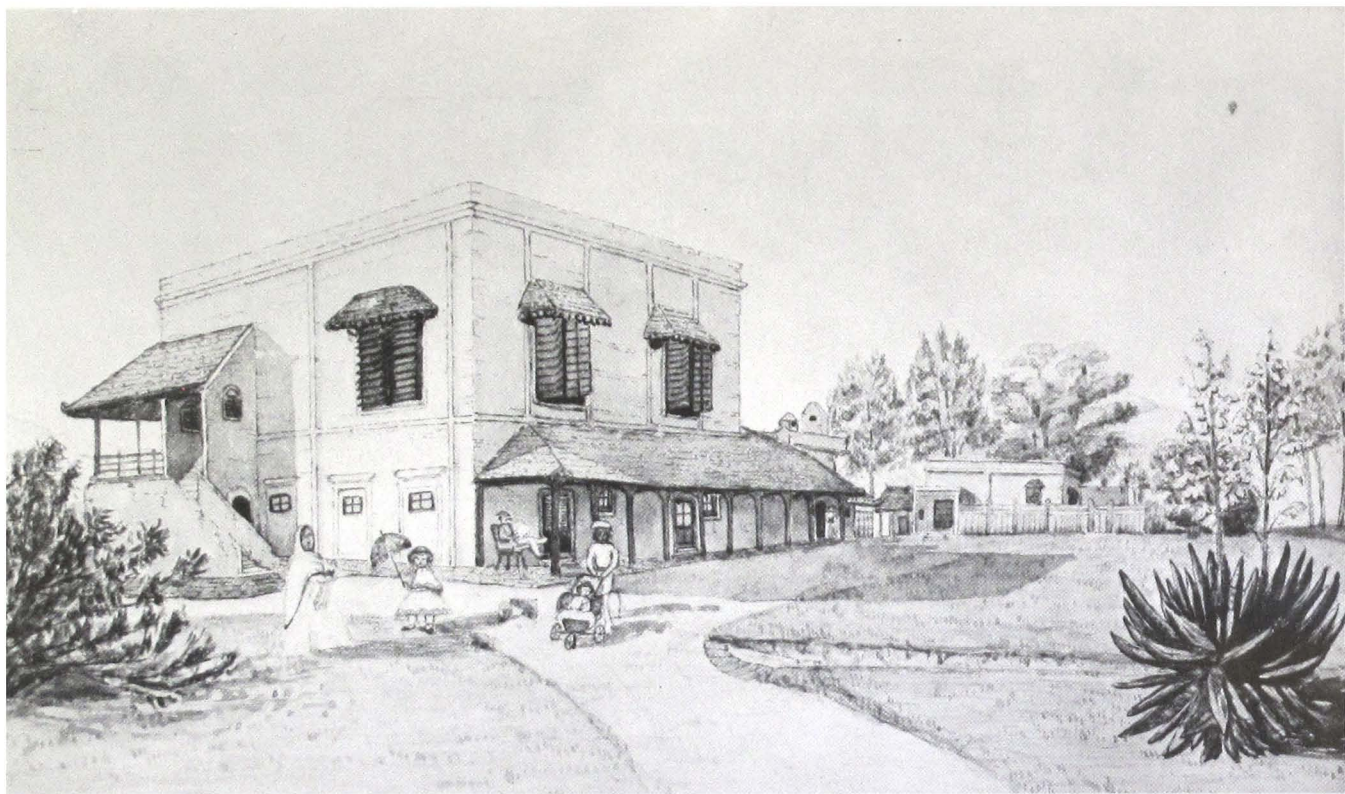
13. Snake-stone at the temple of 'Devi Vajra-Jogini' at Sankhu. 4 December 1857, Wash; 9 by 11 ins. (2859). M.A.O.



*14. Buddhist shrine of Kaithsambhu, Kathmandu. November 1852. Water-colour; 13 by 17 ins. (2832).



15. Pauwah at Gaucharan. December 1857. Wash; 9 by 11 ins. (2860). M.A.O.



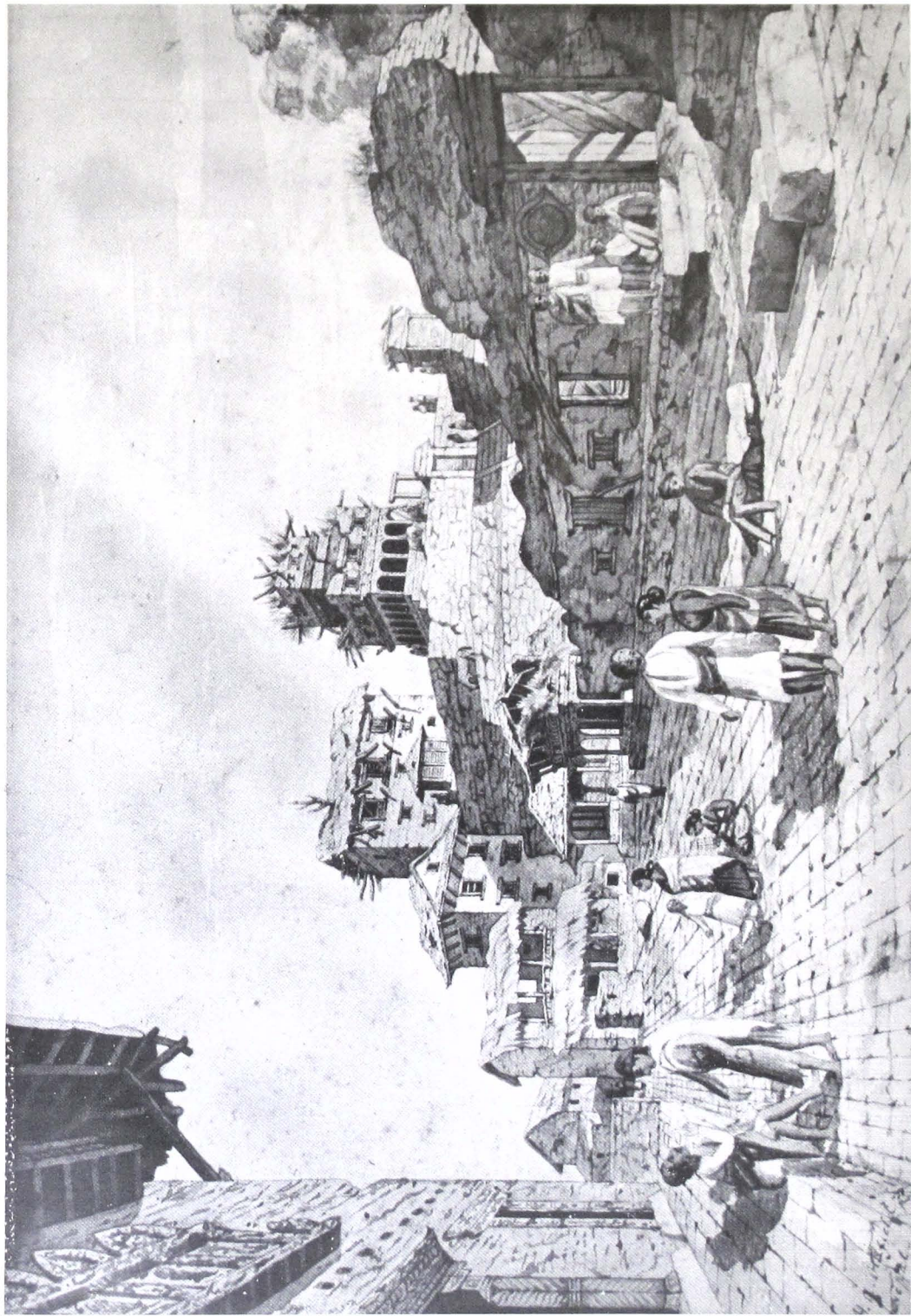
The Residency Surgeon's house, Kathmandu. c. 1864. "Dr. Oldfield (?) seated on the veranda; his children, Lilian and Edmund in the foreground with an ayah and bearer. The hospital in the background." Water-colour; 9 by 15 ins. (2865). M.A.O .



17. "A wooden house." Wash; $5\frac{1}{4}$ by $8\frac{1}{4}$ ins. (2864). M.A.O.



18. Mountain village, Godavari. 22 February 1861. Wash; 9 by 11 $\frac{1}{4}$ ins (2861). M.A.O.



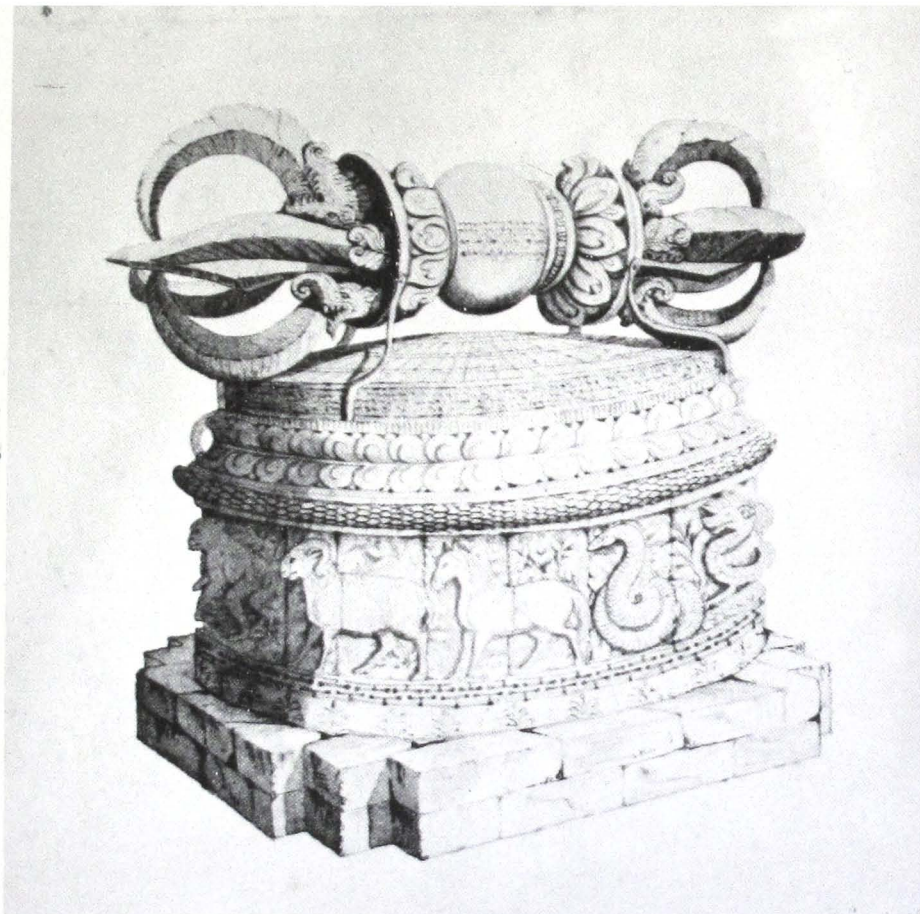
19. The ruins of the Durbar, Kirtipur. c. 1855. Water-colour; 9 by 12½ ins. (2844).



20. Bridge over Visnumati river near Swayambhu. February 1862. Wash; 10 by 14 ins. (2862). M.A.O.



*21. East front of the main Buddhist temple at Swayambhu, with thunderbolt in the foreground. April 1854. Water-colour; 13½ by 19½ ins. (2846).



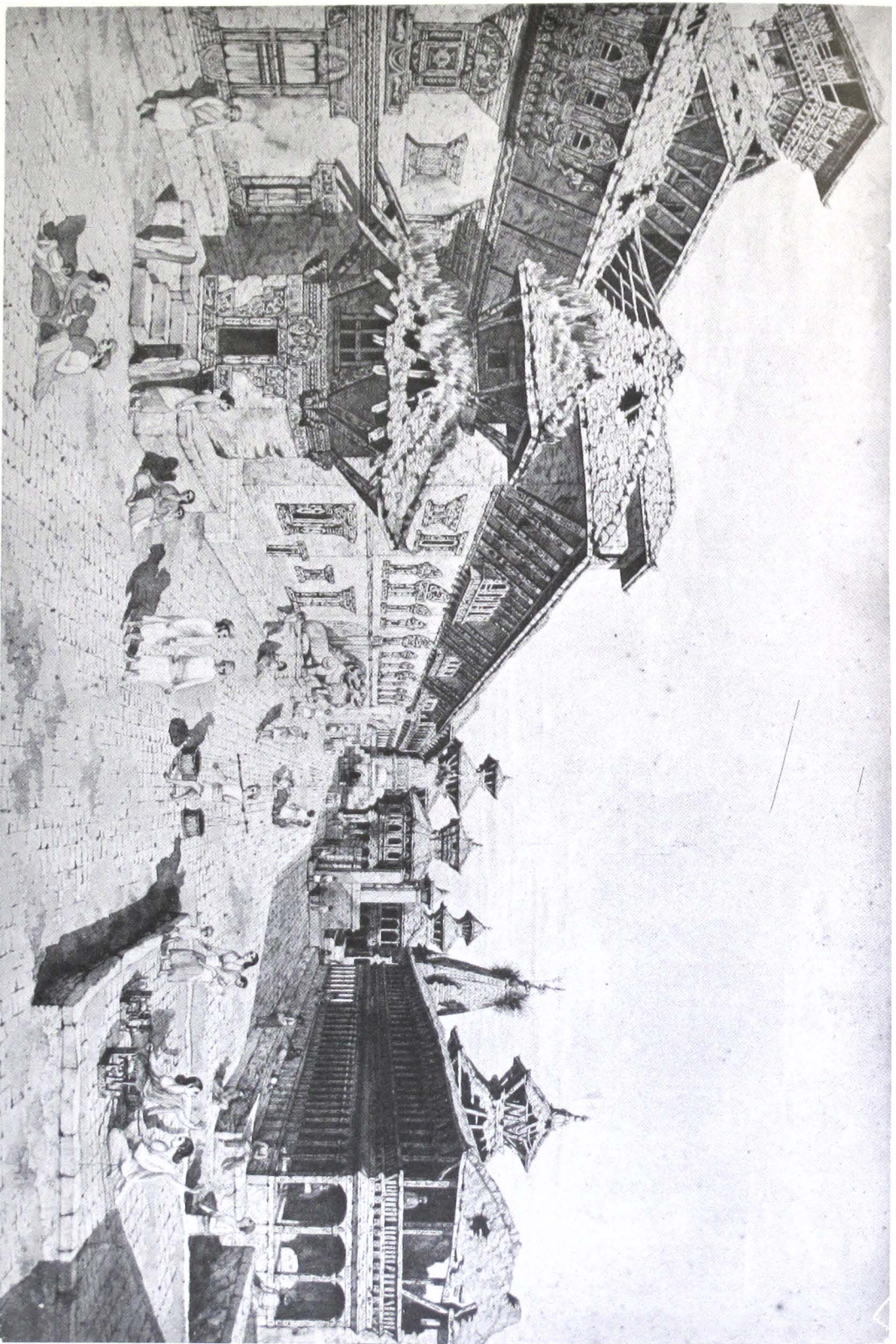
*22. Thunderbolt outside the temple at Swayambhu. April 1854. Water-colour;
10 by 12 ins. (2845).



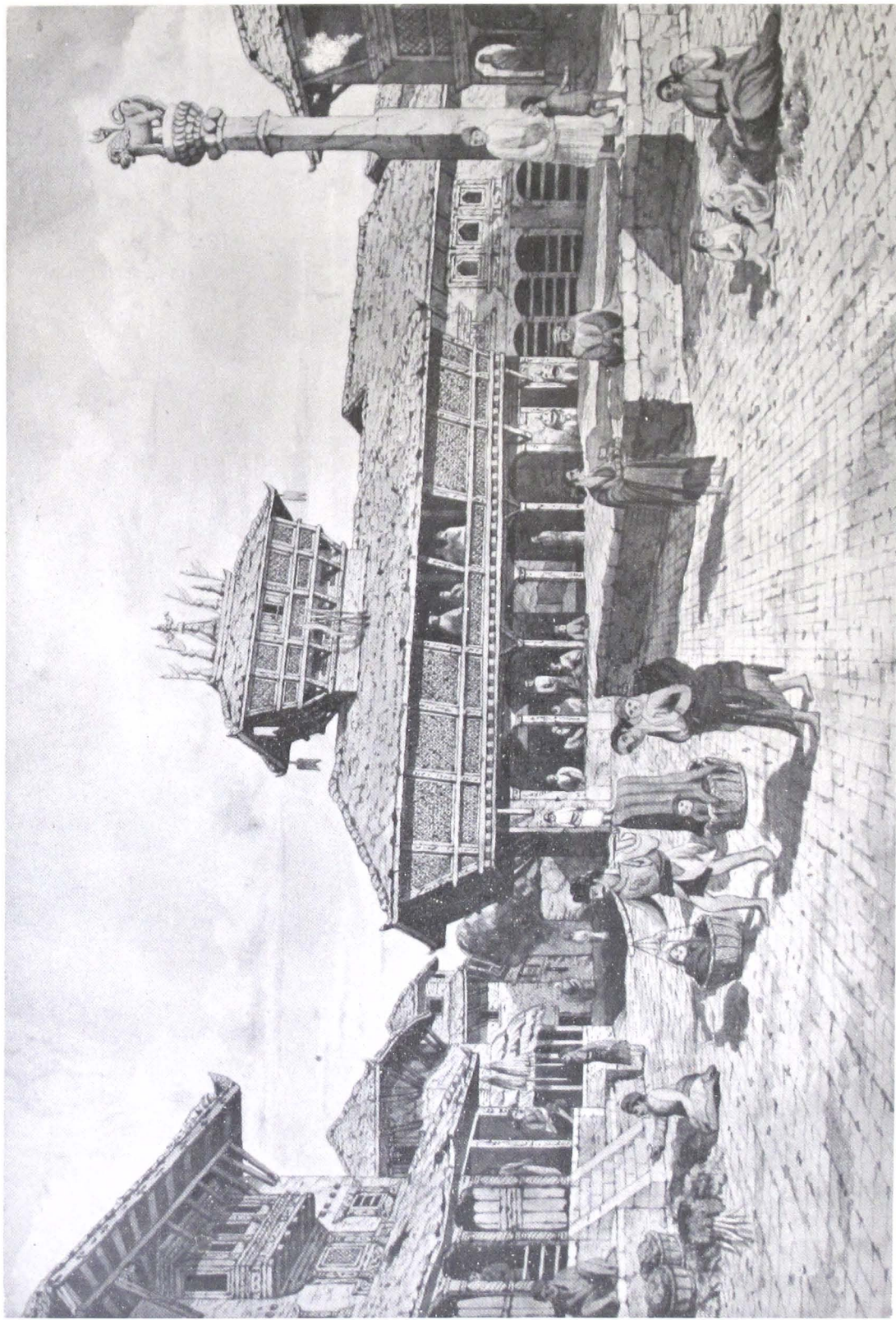
BHAKTAPUR



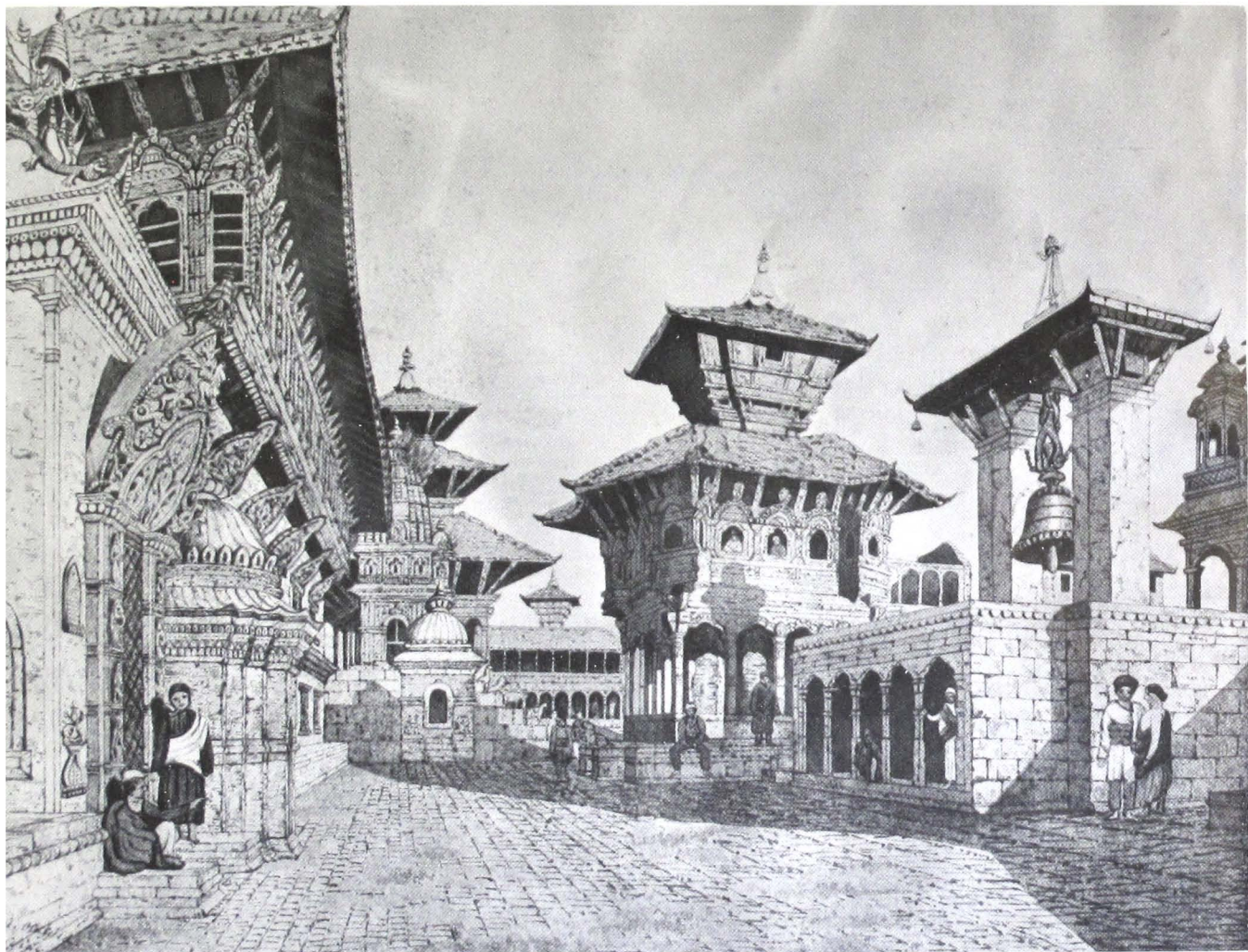
*23. Nyatpola (1700-02), Bhaktapur. c. 1854. Water-colour; 17 by 13½ ins. (2843).



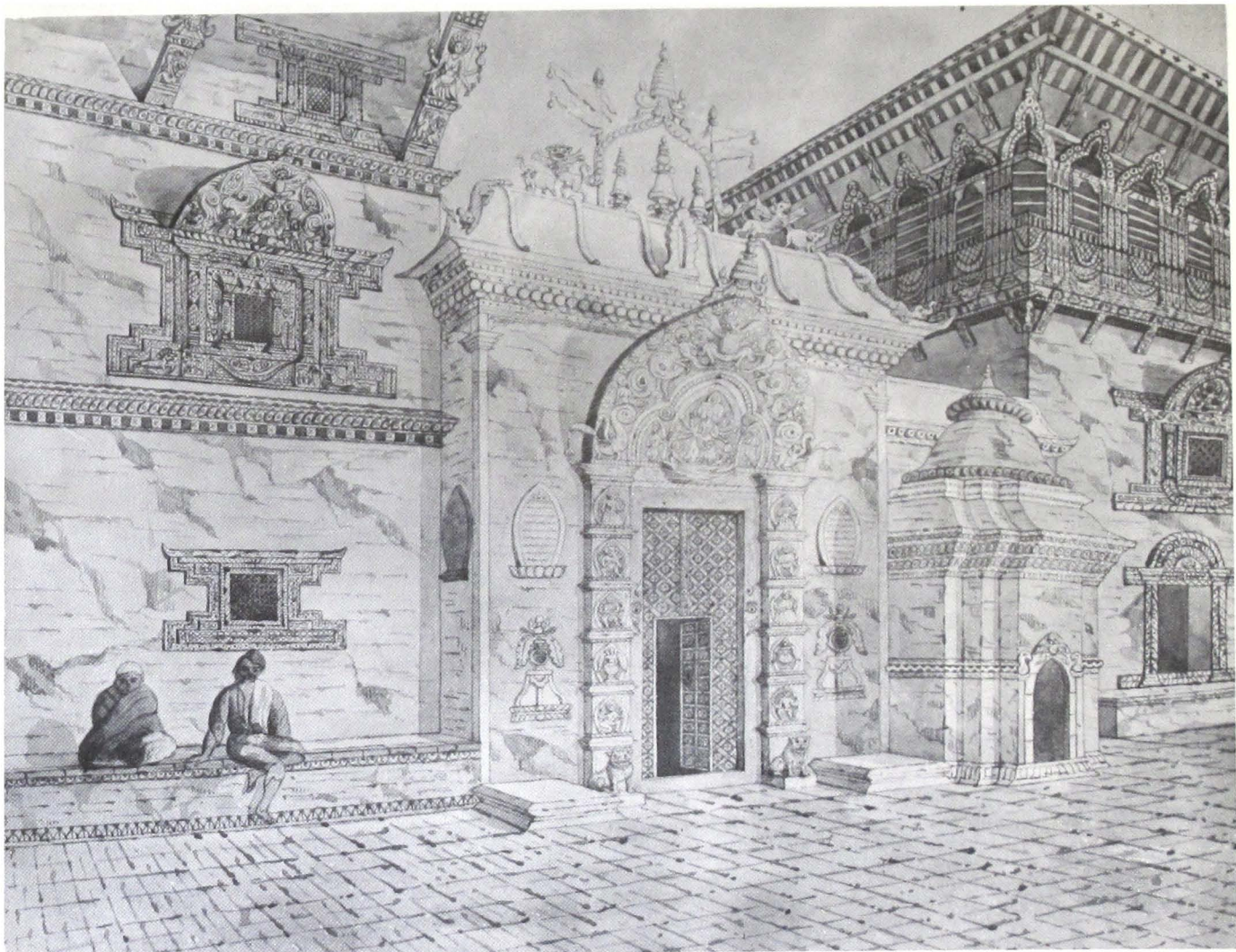
24. South front of the Durbar, Bhakpatpur. March 1853. Water-colour; 12½
by 19 ins. (2835).



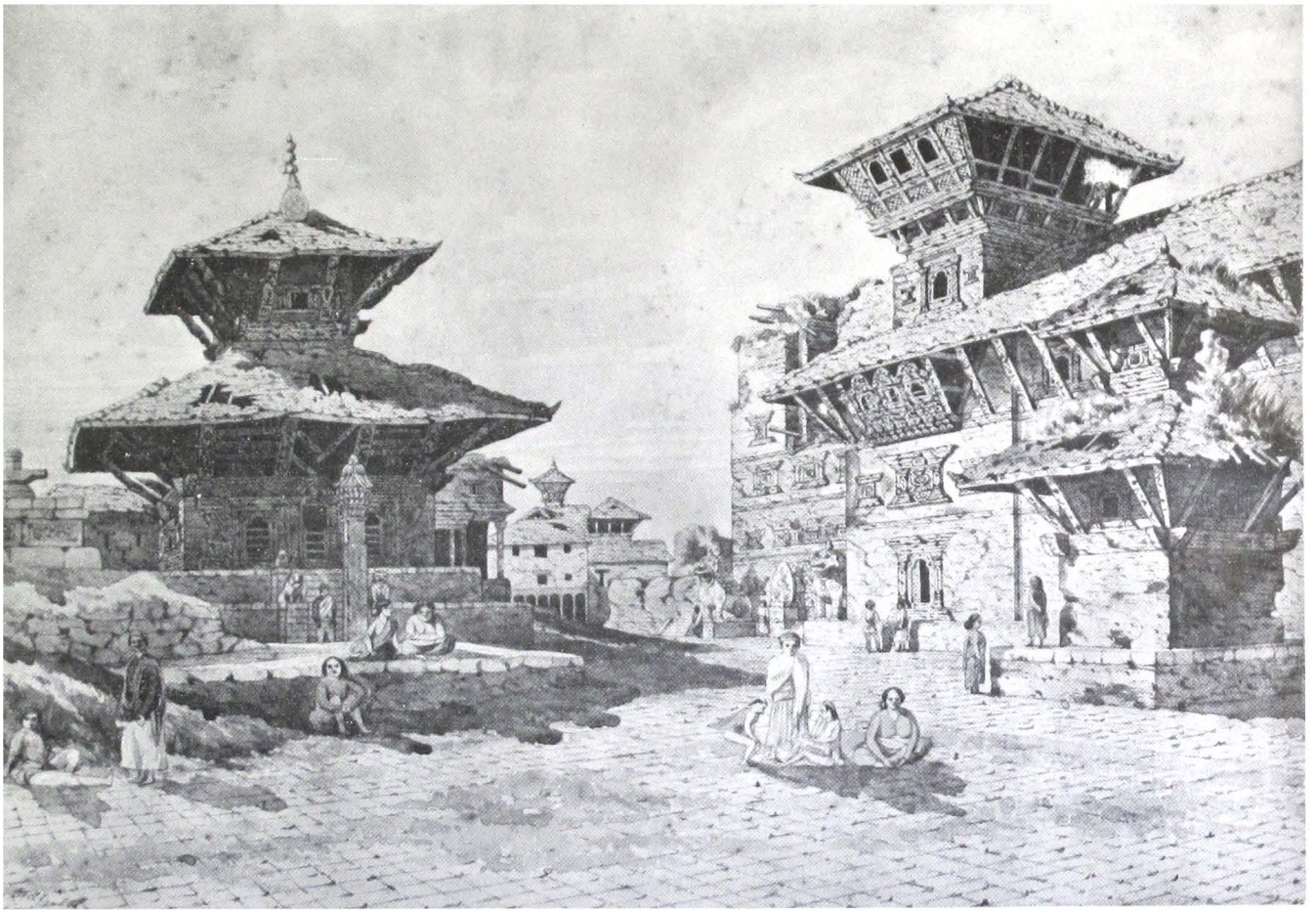
25. Bhimsen Mandir (1654-55). Bhaktapur. c. 1853. Water-colour; 10 $\frac{3}{4}$ by 15 ins. (2838).



5. The Durbar, Bhaktapur. 1854. Water-colour; $11\frac{1}{2}$ by 15 ins. (2841).



*27. The Golden Gate (1753-54) in the Durbar, Bhaktapur. c. 1854. Water-colour; 11 $\frac{3}{4}$ by 14 $\frac{3}{4}$ ins. (3842).

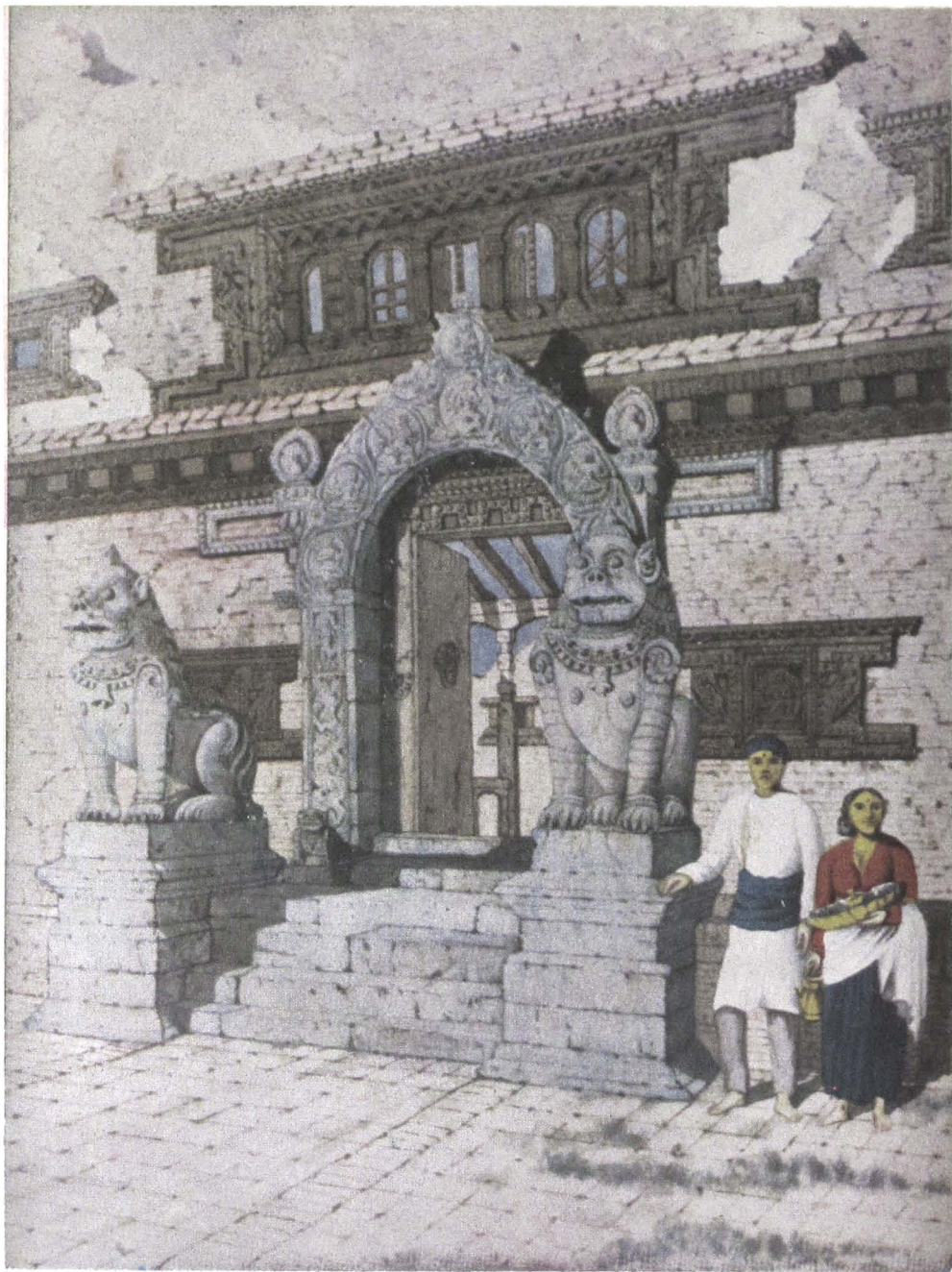


28. West end of the Durbar, Bhaktapur. **March 1853.** Water-colour; 10 by 14½ ins. (2836).

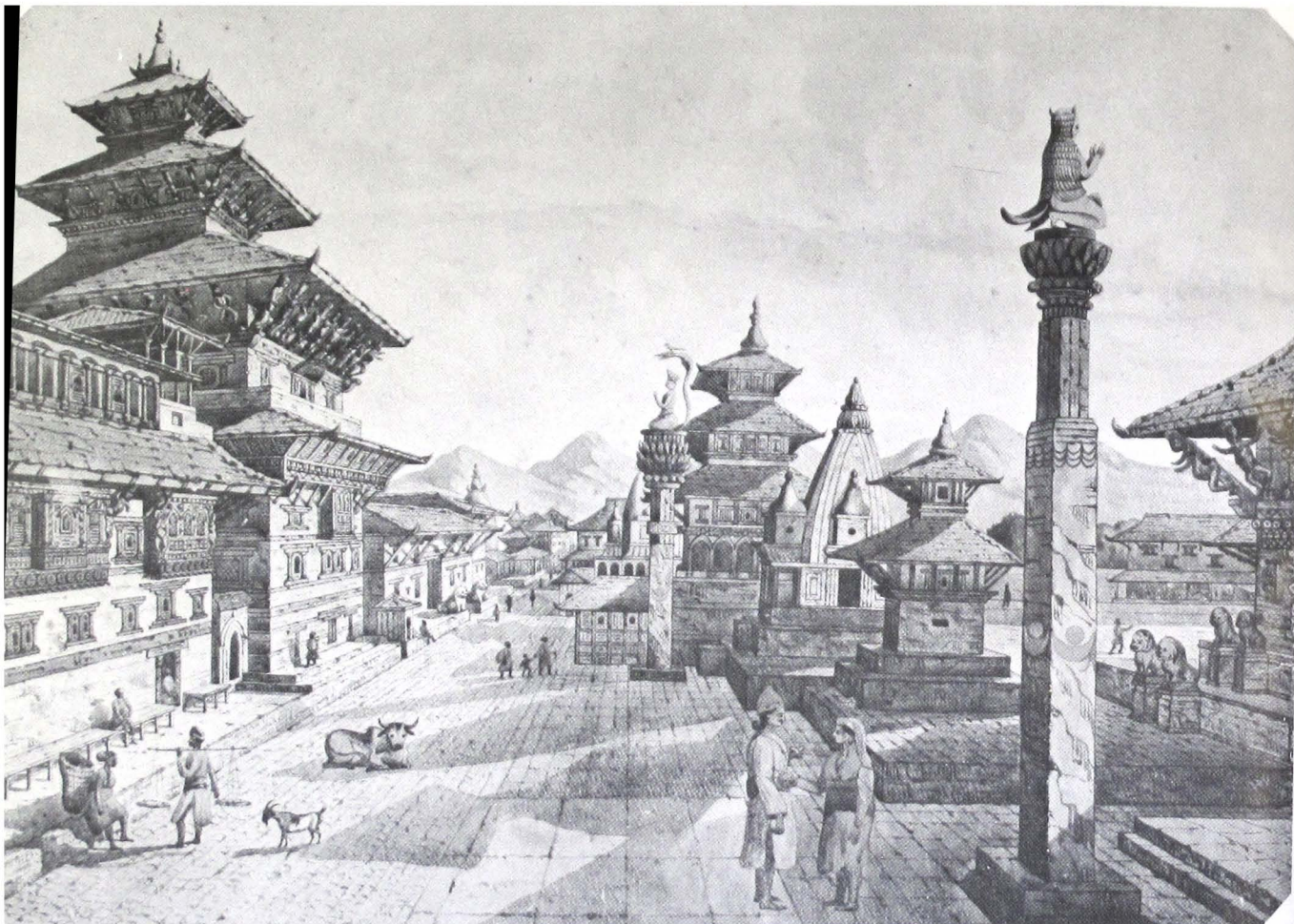


29. Temple of Mahadeo, Bhaktapur. March 1853. Water-colour; 9¼ by 13 ins. (2837).

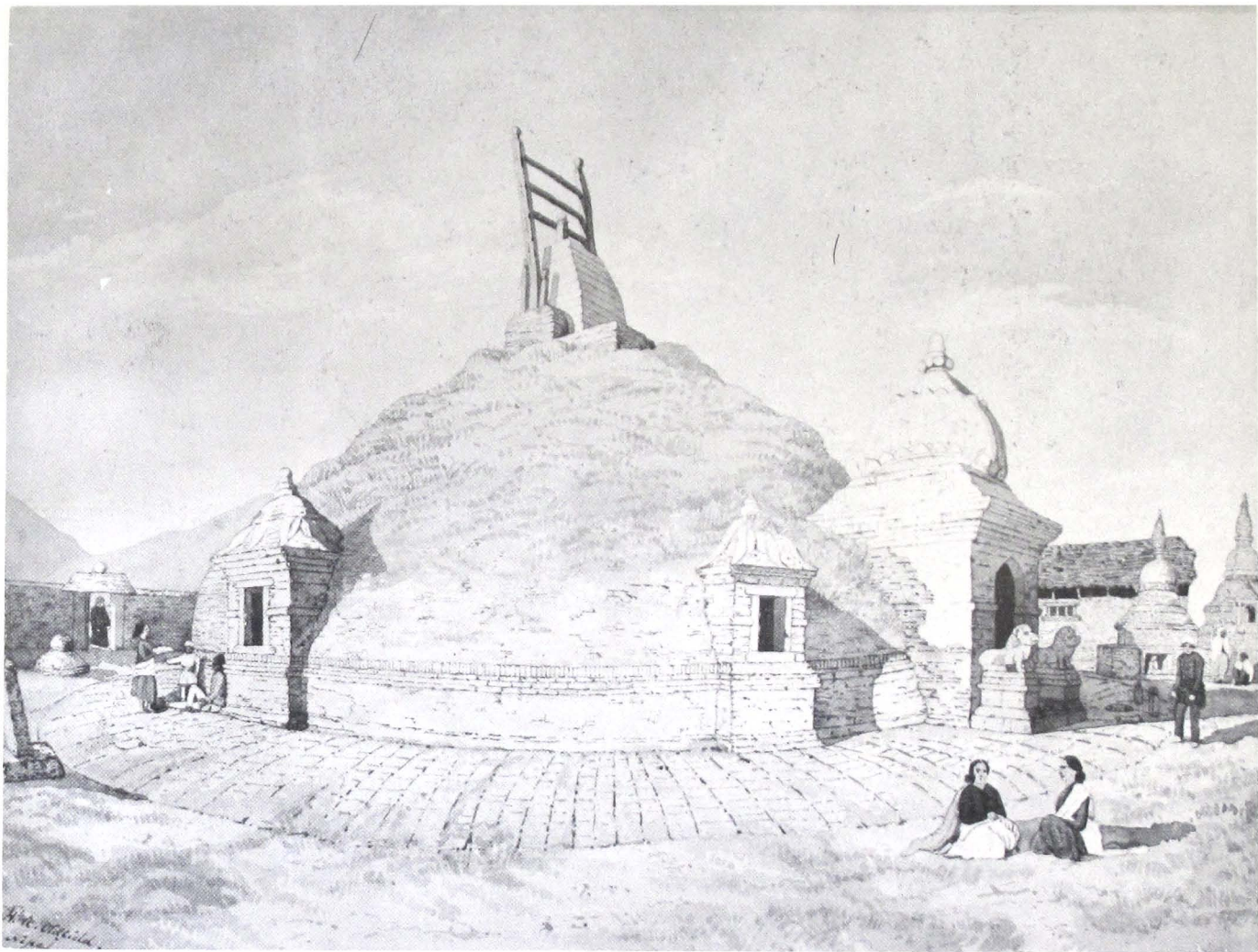
LALITPUR



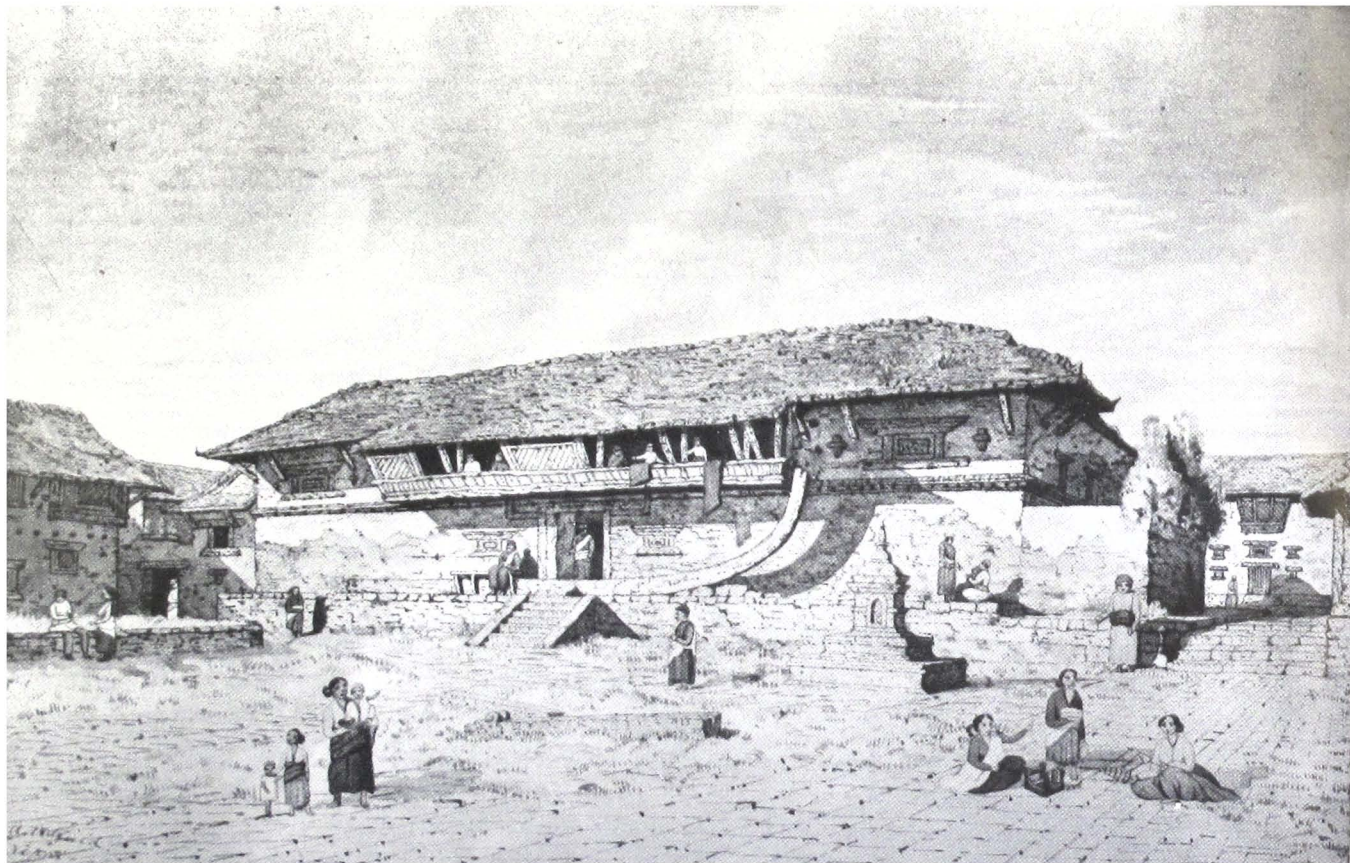
30. "Entrance to 'Huk-Vihar' monastery," Lalitpur. **January 1855.** Water-colour; 15 by 11 ins. (2853).



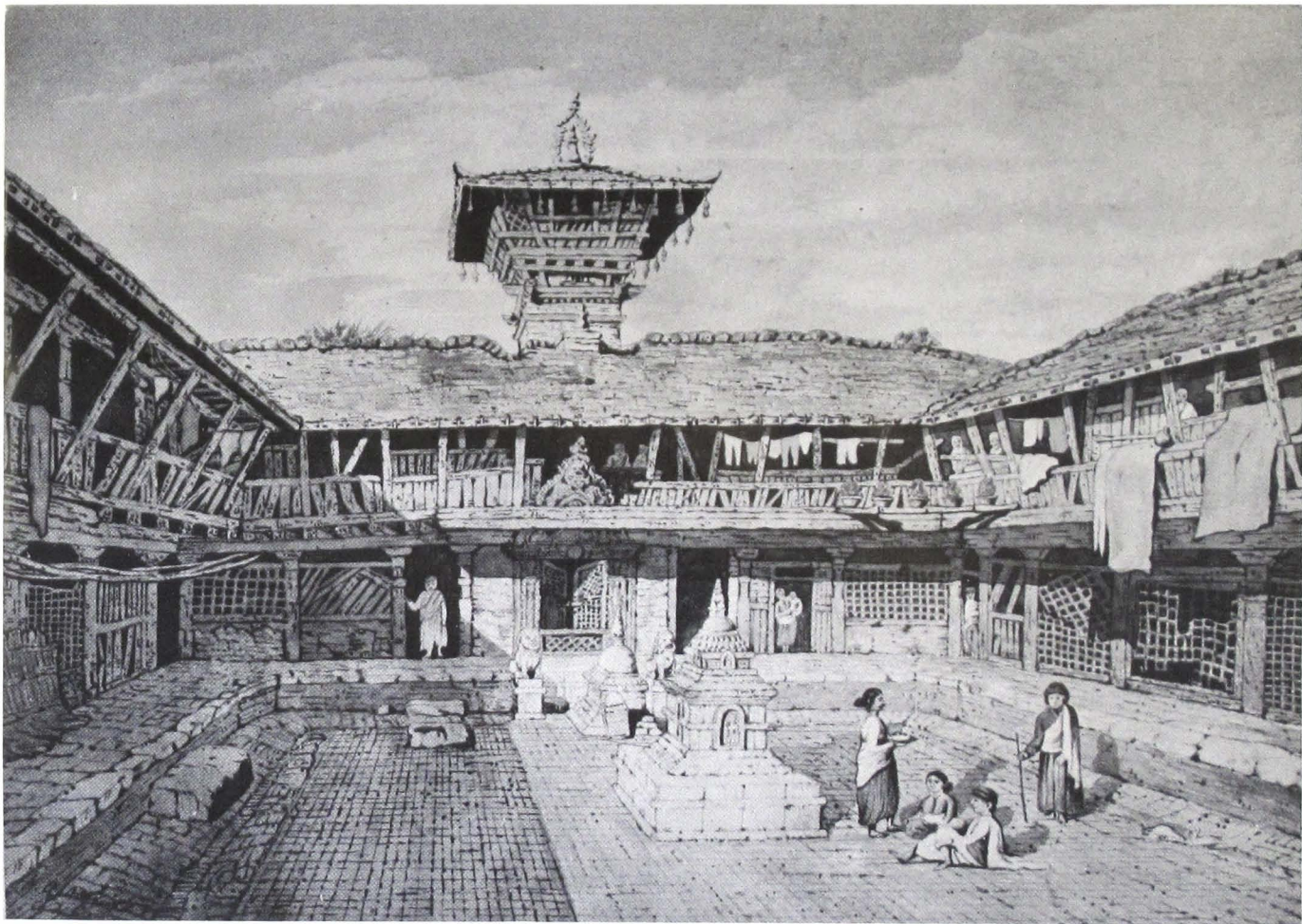
*31. The Durbar, or Royal Palace, Lalitpur. c. 1855. Water-colour; 13½ by 19 ins. (2853).



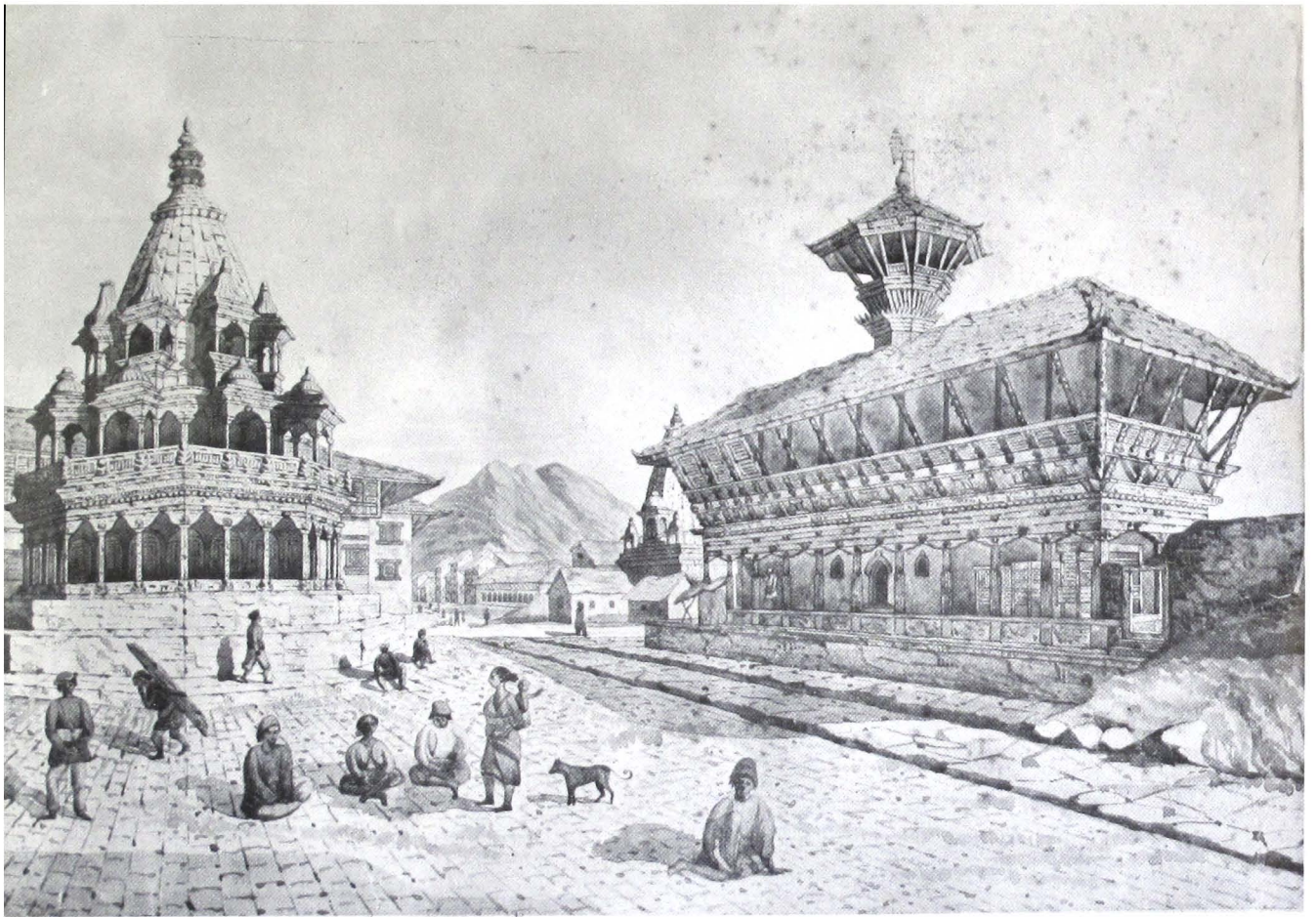
32. North Stupa, Lalitpur. **January 1855.** Water-colour; 10 by 13 ins. (2848).



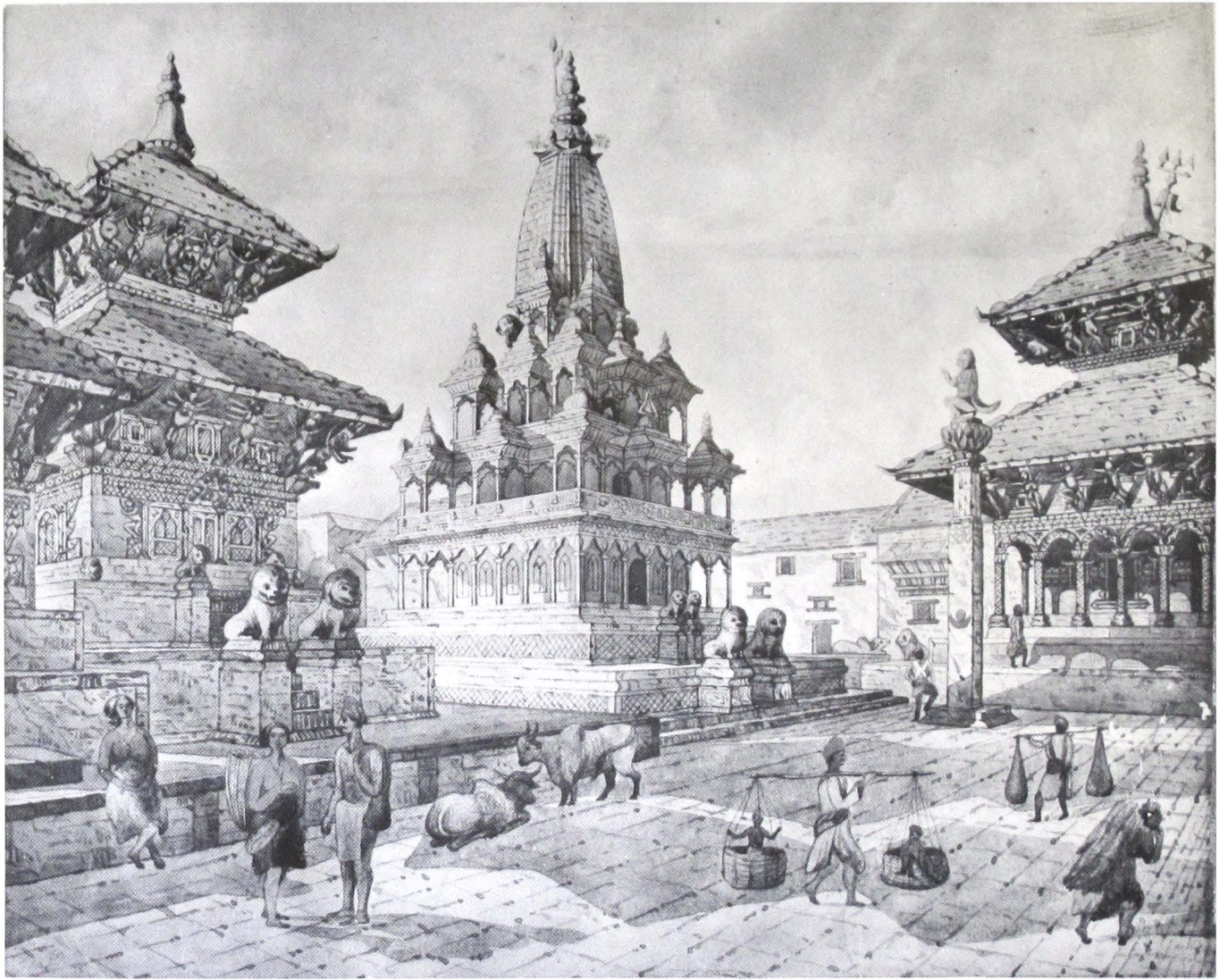
33. North front of Nak Bahee. small Buddhist monastery near Nag Bahal, Lalitpur.
July 1855. Water-colour; $8\frac{1}{4}$ in by $13\frac{3}{4}$ ins. (2849).



34. Interior courtyard of Nan Bahal, large Buddhist monastery between Pulchowk and Lalitpur. c. 1855. Water-colour; 10 by 13½ ins. (2350).



i. The centre of Lalitpur with Krishna Mandir (1722-23) c. 1855. Water-colour;
13½ by 19 ins. (2851).



36. The centre of Lalitpur with Krishna-Dewal Mandir (1636-37). c. 1855. Water colour; 13½ by 16 ins. (2852).

Bibliotheca
Himalayica

